

Thermodyne's 1300G is the perfect answer to applications requiring on-site mobility. This unit is easily relocated from the kitchen to remote serving areas. Using patented Fluid Shelf[®] technology, food quality and safety are a sure thing.

SPECIFICATIONS	
EXTERIOR DIMENSIONS	26.00"W x 34.75"D x 54.00"H
INTERIOR DIMENSIONS	22.00"W x 27.63"D x 40.50"H
CUBIC CAPACITY	14.24ft ³
MAX OPERATING TEMP	230°F
NET WEIGHT	299lbs.
SHIPPING WEIGHT	380lbs.

ELECTRICAL SPECIFICATIONS	
VOLTS	208 / 240
AMPS	25 / 29
TOTAL WATTS	5250 / 7000
HERTZ	60
PHASE †	1
PLUG	NEMA L14-30

SHELVES	
STANDARD	6

CAPACITIES	STANDARD	MAXIMUM*
SHEET PAN		
18" x 26" x 1"	6	15
STEAM TABLE PAN		
12" x 20" x 2.5"	12	20
12" x 20" x 4"	12	14

*Maximum capacities are based on additional shelving. Capacities vary depending on shelf quantities, spacing, and pan depth.

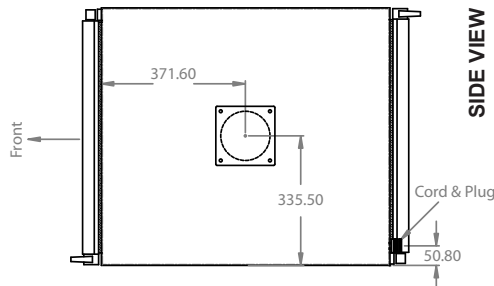
OPTIONS / ACCESSORIES	
Protective Bumper Base	Additional Heat Transfer Plates
Controller Shield	Solid Stainless Steel Doors
Solid Back Panel	Stainless Steel Drip Pan

† Available in 3Ø by request

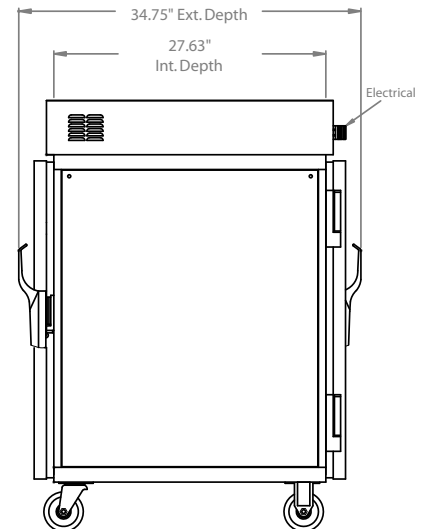
Specifications subject to change without notice.



PLAN VIEW



SIDE VIEW



FRONT VIEW

