

The model 1200G gives chefs and operators all of the benefits of Fluid Shelf® technology in one compact unit. Perfect for medium to high volume locations this single stack unit provides unparalleled versatility and capacity. Available with standard casters or on an optional base extension.



SPECIFICATIONS	
EXTERIOR DIMENSIONS	26.00"W x 34.75"D x 43.75"H*
INTERIOR DIMENSIONS	22.00"W x 27.63"D x 30.25"H
CUBIC CAPACITY	10.64ft³
MAX OPERATING TEMP	230°F
NET WEIGHT	259lbs.
SHIPPING WEIGHT	350lbs.

ELECTRICAL SPECIFICATIONS	
VOLTS	208 / 240
AMPS	25 / 29
TOTAL WATTS	5250 / 7000
HERTZ	60
PHASE †	1
PLUG	NEMA L14-30

SHELVES	
STANDARD	5

CAPACITIES	STANDARD	MAXIMUM**
SHEET PAN		
18" x 26" x 1"	5	10
STEAM TABLE PAN		
12" x 20" x 2.5"	10	14
12" x 20" x 4"	10	10

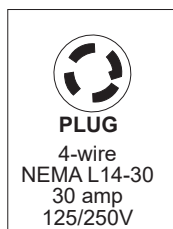
*Optional base extension increases exterior height by 18".

**Maximum capacities are based on additional shelving. Capacities vary depending on shelf quantities, spacing, and pan depth.

OPTIONS / ACCESSORIES	
Protective Bumper Base	Additional Heat Transfer Plates
Extension Base	Solid Stainless Steel Doors
Solid Back Panel	Stainless Steel Drip Pan

† Available in 3Ø by request

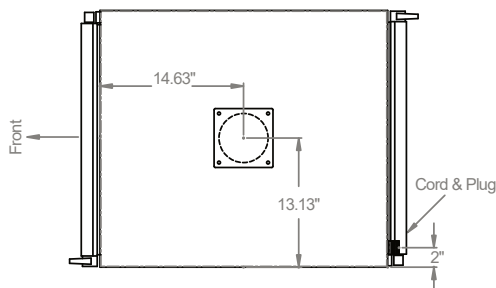
Specifications subject to change without notice.



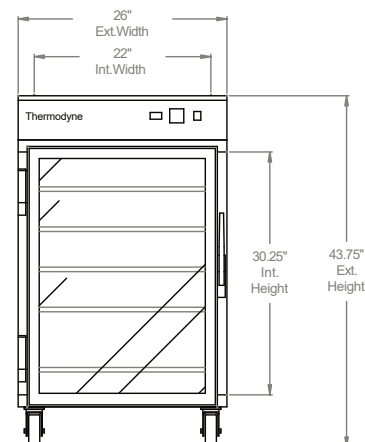
Patented

REV. 12/20

PLAN VIEW



FRONT VIEW



SIDE VIEW

