

Ideal for mass feeding environments, Thermodyne's 2100DW is designed for the demands of high volume schools, hospitals, correctional facilities, military, and other institutional settings. With sizeable upper and lower compartments, every shelf maintains exact temperature distribution using Thermodyne's patented Fluid Shelf® technology.



SPECIFICATIONS	
EXTERIOR DIMENSIONS	43.00"W x 30.25"D x 75.00"H
INTERIOR DIMENSIONS	39.00"W x 26.81"D x 58.50"H
CUBIC CAPACITY	35.40ft <sup>3</sup>
MAX OPERATING TEMP	230°F
NET WEIGHT	654lbs.
SHIPPING WEIGHT	924lbs.

ELECTRICAL SPECIFICATIONS	
VOLTS	208 / 240
AMPS	25 / 29
TOTAL WATTS	5250 / 7000
HERTZ	60
PHASE †	1
PLUG	NEMA L14-30

SHELVES	
STANDARD	10

CAPACITIES	STANDARD	MAXIMUM*
SHEET PAN		
18" x 26" x 1"	20	42
STEAM TABLE PAN		
12" x 20" x 2.5"	30	42
12" x 20" x 4"	30	30

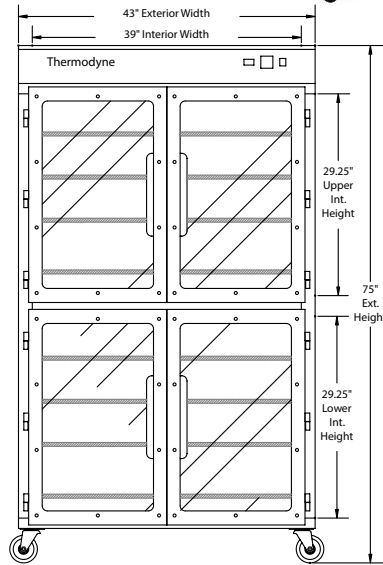
\*Maximum capacities are based on additional shelving. Capacities vary depending on shelf quantities, spacing, and pan depth.

OPTIONS / ACCESSORIES	
Protective Bumper Base	Additional Heat Transfer Plates
Controller Shield	Solid Stainless Steel Doors
Solid Back Panel	Stainless Steel Drip Pan

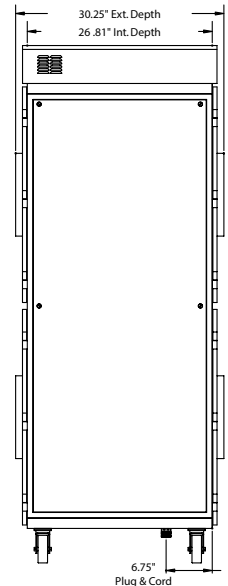
† Available in 3Ø by request

Specifications subject to change without notice.

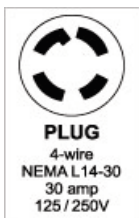
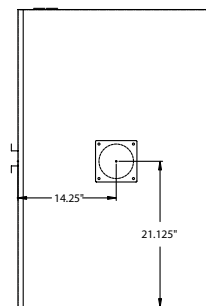
FRONT VIEW



SIDE VIEW



PLAN VIEW



Patented

REV. 4/16